


THE LAKES
at Shady Nook

Brand New Floorplan



3661 Shady Lake Drive • Westfield, IN

\$425,000

BRAND NEW ESTRIDGE DESIGN 2 story great room, covered lanai, finished basement, 3 car garage, laundry access from master bedroom, lower level bathroom rough-in, mud-room boot bench, walk-in pantry, Hardwood floors, granite countertops, great room fire place, lower level egress windows, additional garage storage

Available: May



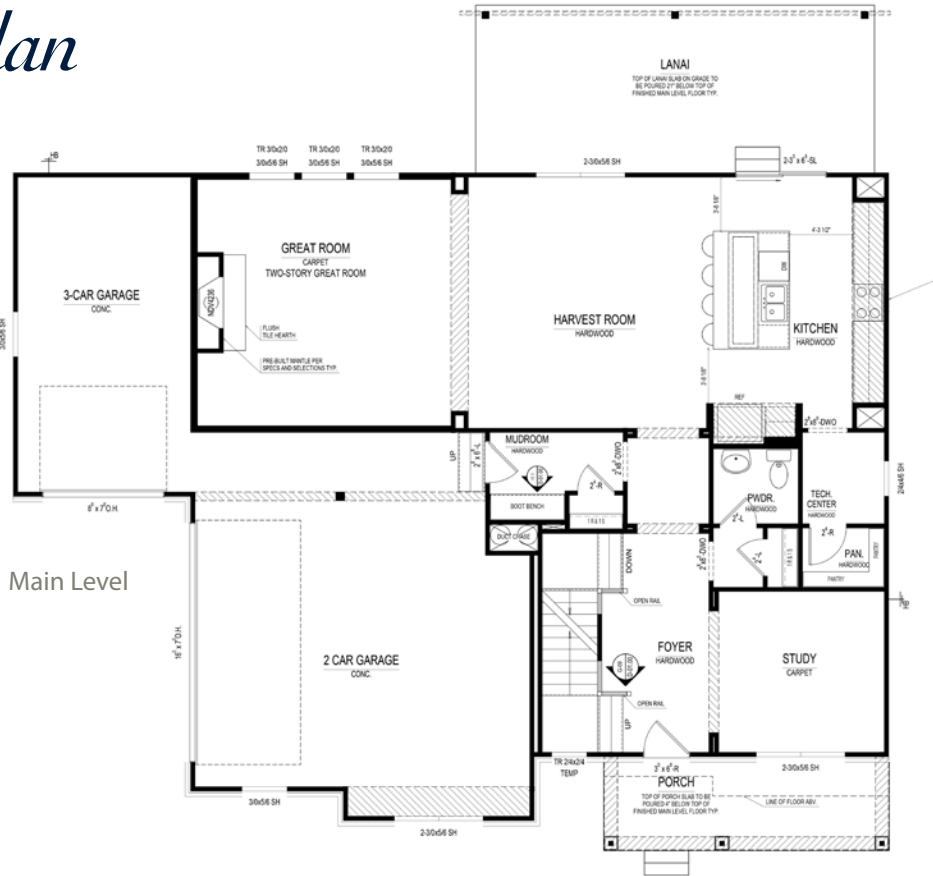
*Different by Design*SM

For information call 317-669-6217 • Visit online at estridge.com

Brand New Floorplan

At a glance

- Homesite:** 14
- Plan:** C014
- Sq Ft:** 3,952
- Bedrooms:** 4
- Baths:** 3 full and 1 half
- Garage:** 3
- Lower Level:** Finished
- BLC#:** Not yet listed



Upper Level



Lower Level



For information call 317-669-6217 • Visit online at estrledge.com

*Square footage includes finished lower level. The artistic renderings of floorplan and front elevation are subject to change. ©2017 Estridge Homes

