

  
**THE LAKES**  
*at Shady Nook*

*Brand New Floorplan*



3654 Idlewind Drive • Westfield, IN

\$479,900

**\*BRAND NEW ESTRIDGE DESIGN\*** 5 bedroom 4.5 bath with a two-story great room featuring a coffered ceiling, laundry access from one of the two master closets, master bath super shower, granite and quartz countertops, guest suite, Jack and Jill bathroom, finished basement with bedroom and bathroom, rear covered lanai, study, walk-in pantry, mud room boot bench, 3 car garage and more

Available: October

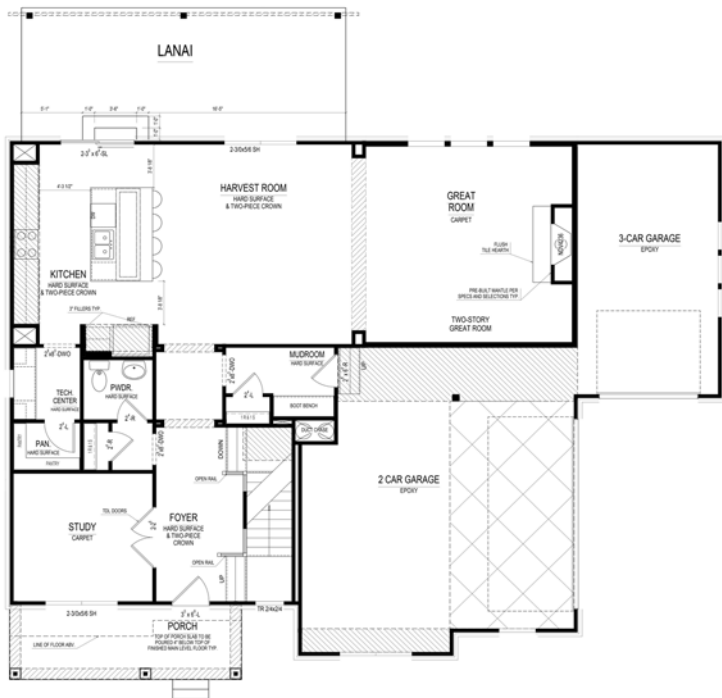


*Different by Design*<sup>SM</sup>

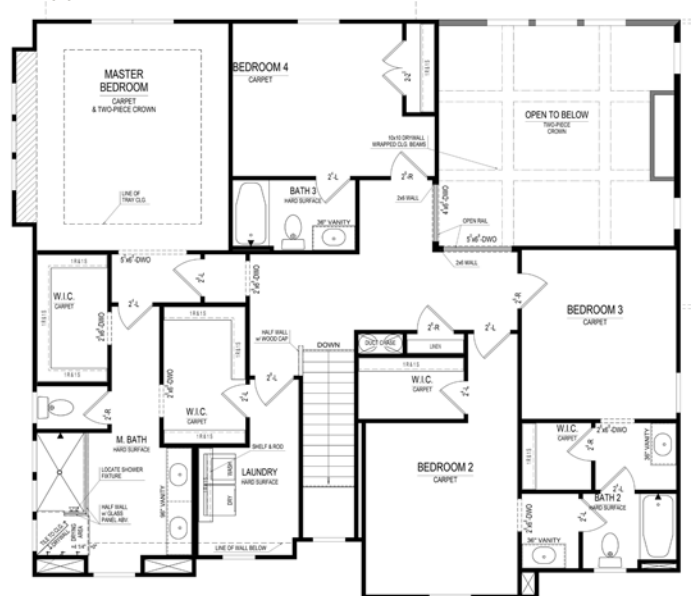
For information call 317-669-6217 • Visit online at [estridge.com](http://estridge.com)

# Brand New Floorplan

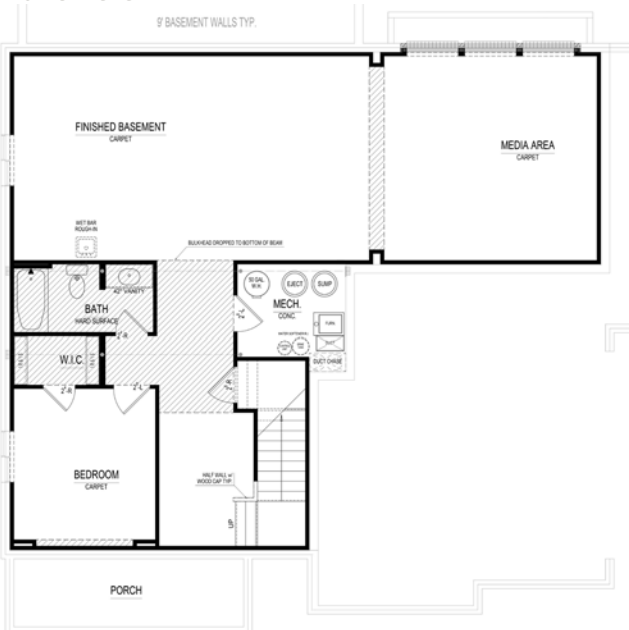
Main Level



Upper Level



Lower Level



## At a glance

- Homesite:** 31
- Plan:** C031
- Sq Ft:** 4,303
- Bedrooms:** 5
- Baths:** 4 full and 1 half
- Garage:** 3
- Lower Level:** Finished
- BLC#:** Not yet listed



For information call 317-669-6217 • Visit online at [estrledge.com](http://estrledge.com)

\*Square footage includes finished lower level. The artistic renderings of floorplan and front elevation are subject to change. ©2018 Estridge Homes

