


THE LAKES
at Shady Nook

Brand New Floorplan



3621 Shady Lake Drive • Westfield, IN

\$425,000

BRAND NEW ESTRIDGE DESIGN 4 bedroom, 3.5 bath with large study, 2nd floor laundry room, granite countertops, dining room, hardwood floors, 36" gas fireplace, large his and hers walk-in closets, rear covered lanai, jack and jill bathroom, gas range, 3-car garage, mud-room boot bench, finished basement, and more

Available: June



*Different by Design*SM

For information call 317-669-6217 • Visit online at estrledge.com

Brand New Floorplan

At a glance

Homesite: 12

Plan: Concept A

Sq Ft: 3,925

Bedrooms: 4

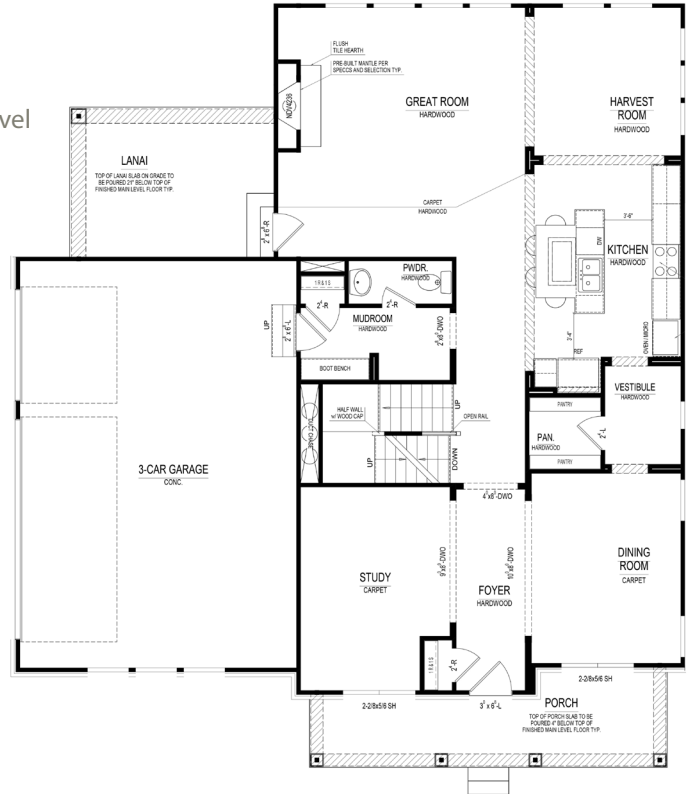
Baths: 3 full and 1 half

Garage: 3

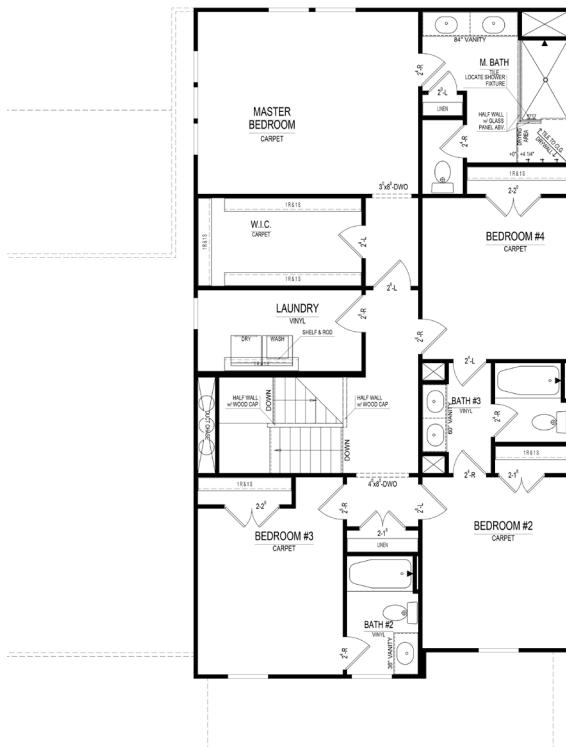
Lower Level: Finished

BLC#: Not yet listed

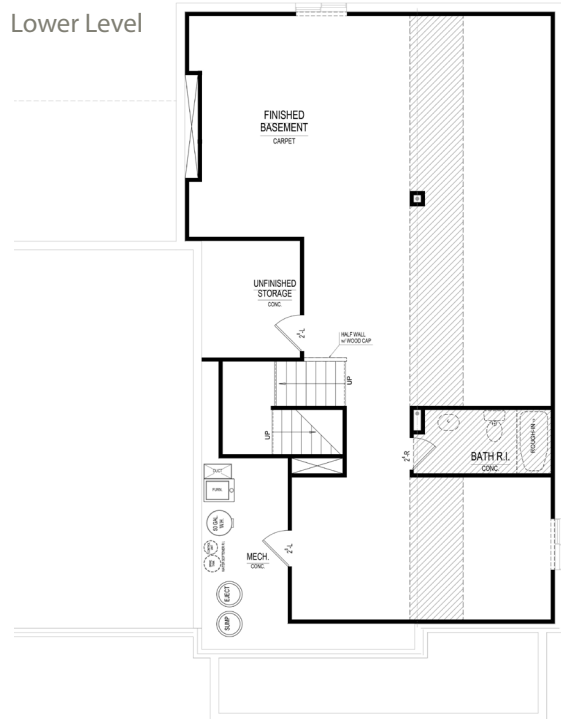
Main Level



Upper Level



Lower Level



For information call 317-669-6217 • Visit online at estridge.com

*Square footage includes finished lower level. The artistic renderings of floorplan and front elevation are subject to change. ©2018 Estridge Homes

