


THE LAKES
at Shady Nook

Brand New Floorplan



3421 Shady Lake Drive • Westfield, IN

\$425,000

BRAND NEW ESTRIDGE DESIGN 4 bedroom 3.5 bath with a two story great room, laundry access from one of the two the master closets, master bath super shower, garden tub, gourmet kitchen, granite and quartz countertops, guest suite, Jack and Jill bathroom, finished basement, rear covered lanai, study, tech center, mud room boot bench, 3 car garage and more

Available: September



*Different by Design*SM

For information call 317-669-6217 • Visit online at estrledge.com

Brand New Floorplan

At a glance

Homesite: 2

Plan: C02

Sq Ft: 3,952

Bedrooms: 4

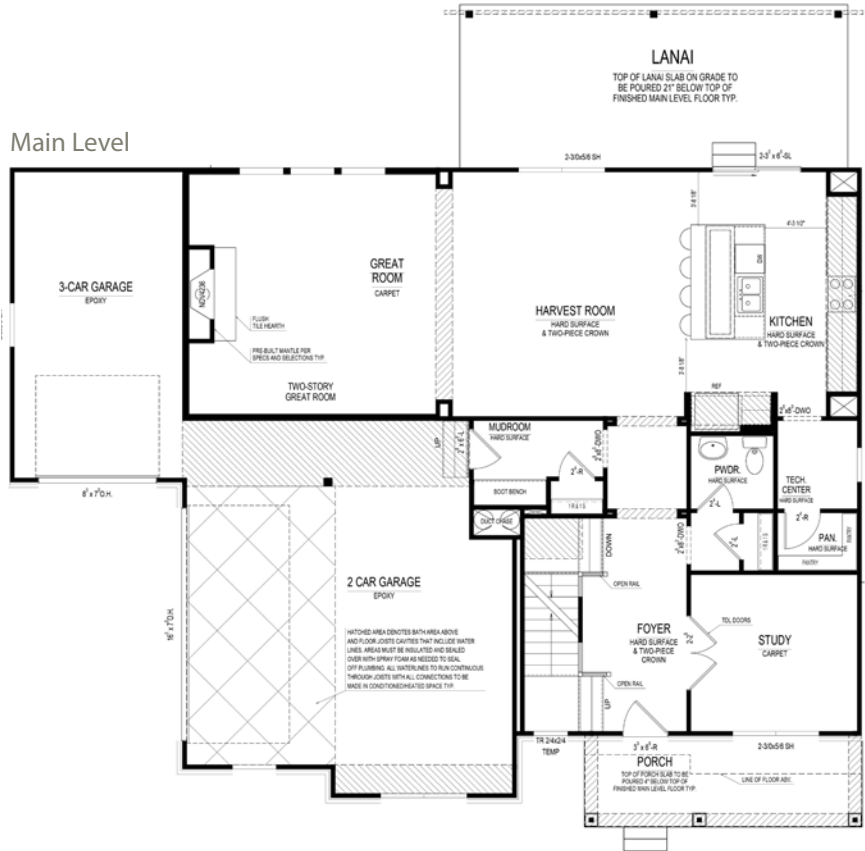
Baths: 3 full and 1 half

Garage: 3

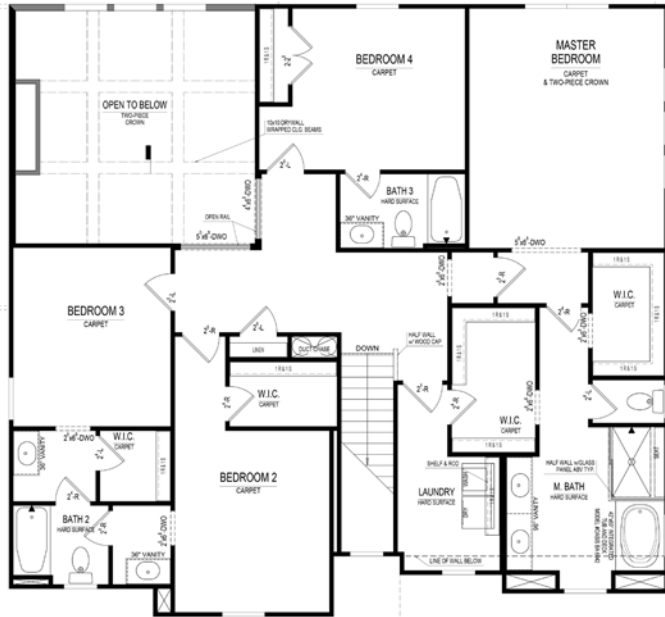
Lower Level: Finished

BLC#: Not yet listed

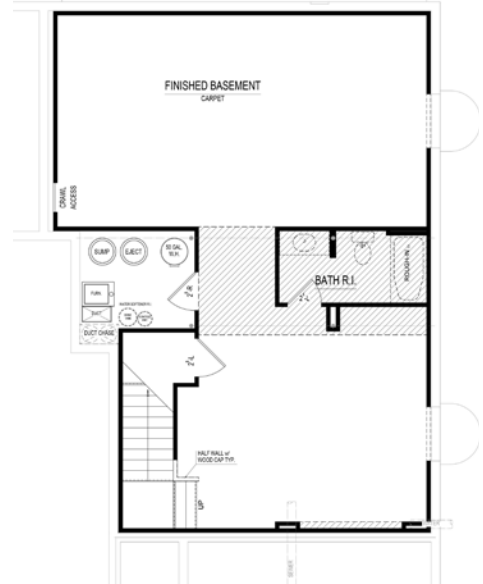
Main Level



Upper Level



Lower Level



For information call 317-669-6217 • Visit online at estrIDGE.com

*Square footage includes finished lower level. The artistic renderings of floorplan and front elevation are subject to change. ©2018 Estridge Homes

