

Aaron

HAMILTON COLLECTION



1668 Avondale Drive • \$584,900

Available in December

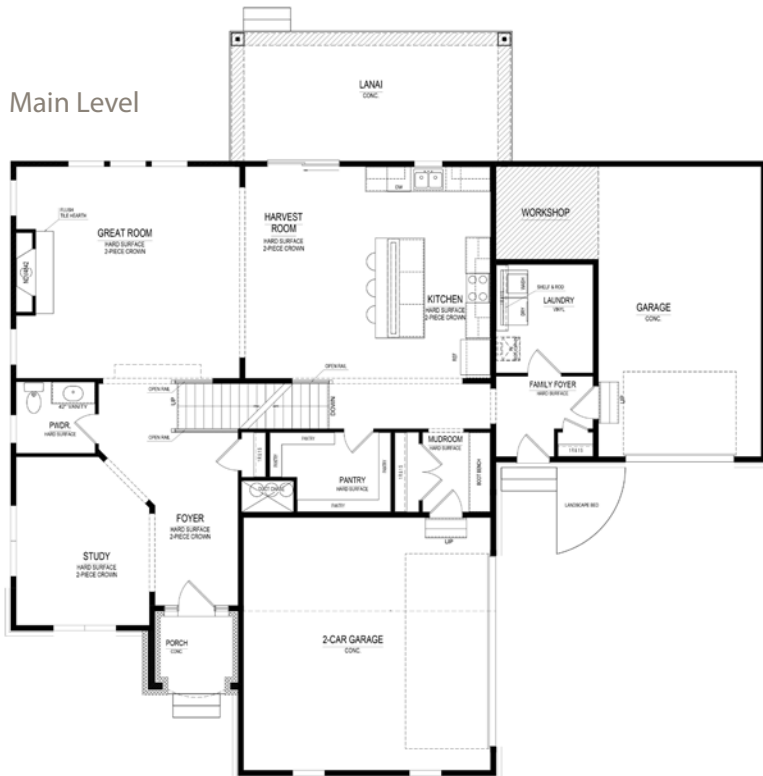
- | | | |
|---|---|-----------------------------------|
| Gourmet kitchen w/ large walk-in pantry | • | 3-car garage w/ separate workshop |
| Crown molding on main floor | • | Granite and quartz countertops |
| His and Her walk-in closets | • | 2-story great room w/ fireplace |
| Jack and Jill bathroom | • | Finished basement |
| Breezeway boot bench | • | Friend's entrance |
| Guest suite | • | Covered lanai |
| Gas range | • | Garden tub |



Harmony

A neighborhood for a new way of living

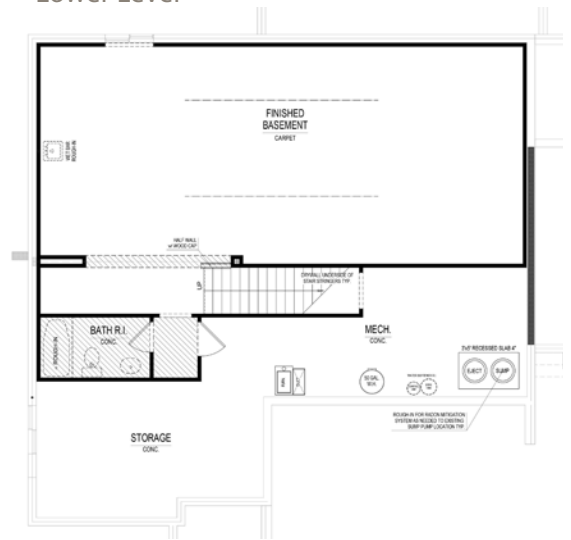
Main Level



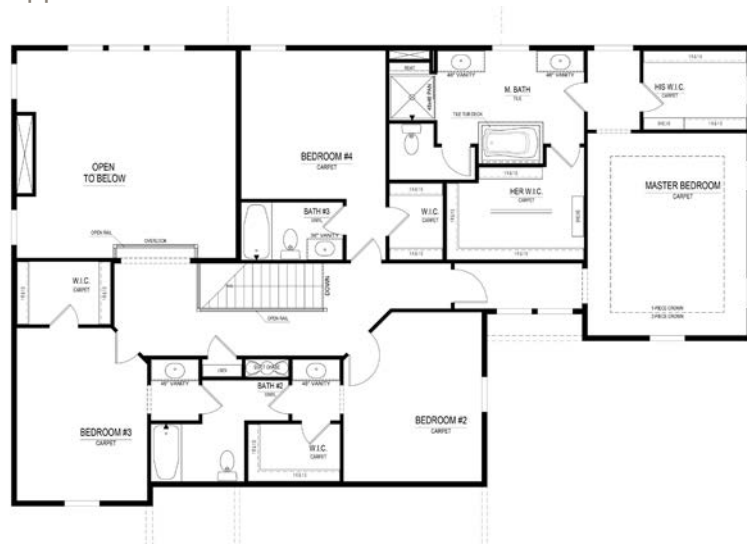
Home Details

Homesite: 273
Plan: 4585A
Sq Ft: 4,244
Bedrooms: 4
Baths: 3 full and 1 half
Garage: 3
Lower Level: Finished
BLC#: Not yet listed

Lower Level



Upper Level



Call us at 669.6224 or visit online at Estridge.com

The artistic renderings of the floorplan and front elevation may not reflect the exact features of the home being offered and are subject to change without notice. ©2018 Estridge Homes.