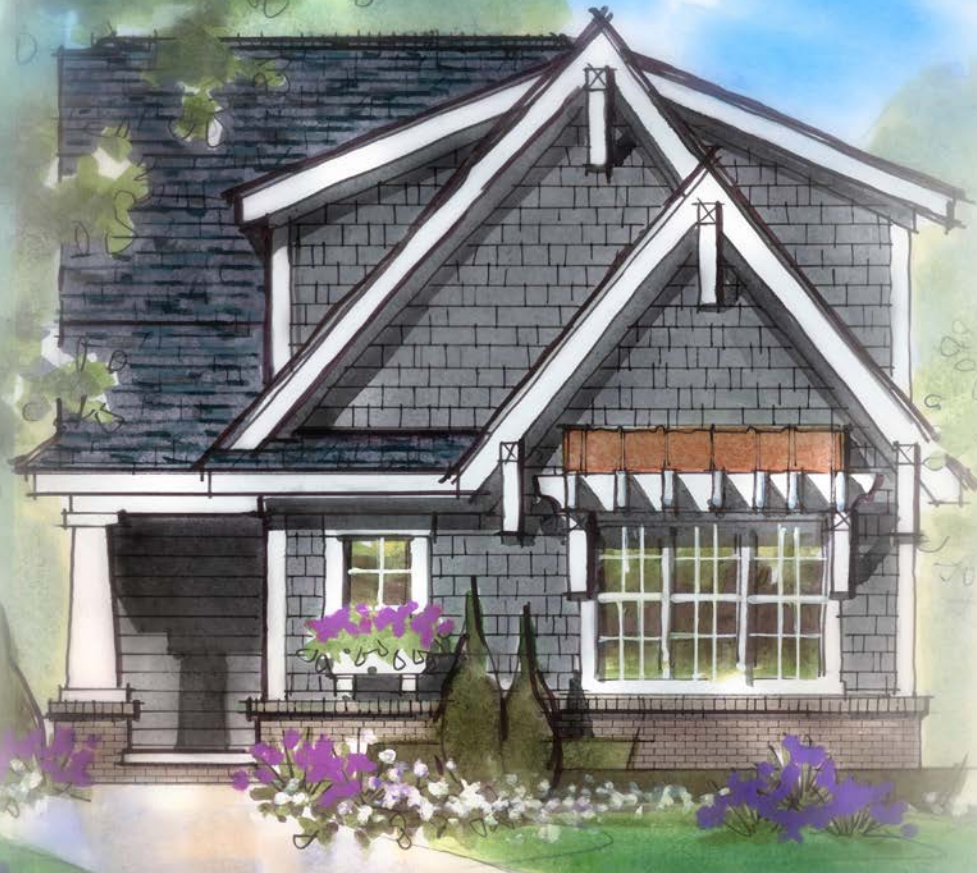


Ainsley

COTTAGE COLLECTION



15487 Heatherbank Drive • **\$383,900**

Available in February

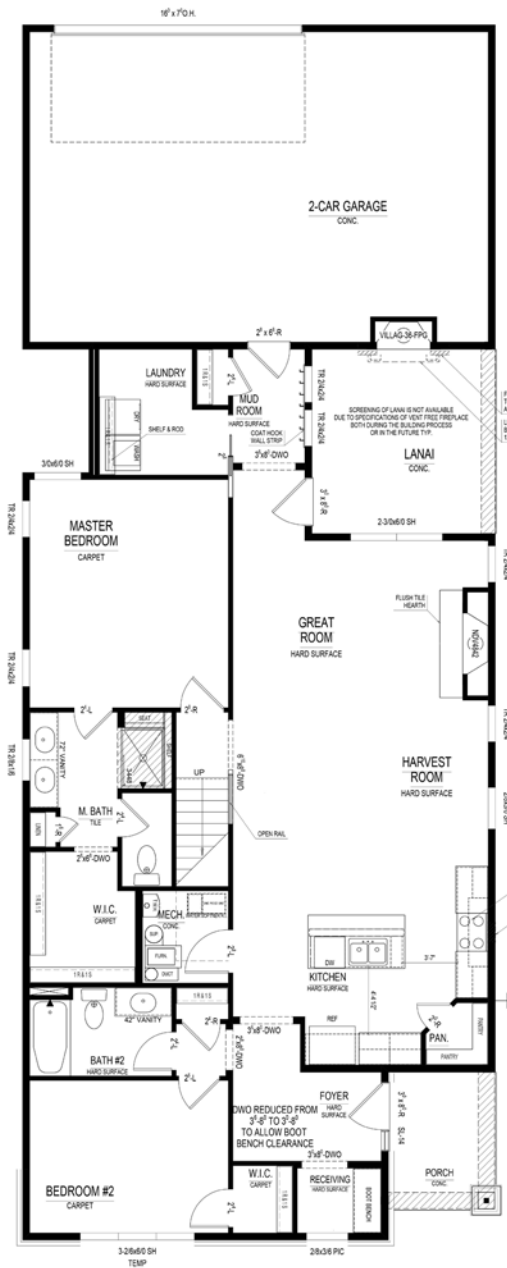
- Ranch Floor Plan
- Spacious Ensuite Upstairs
- Vent Free Lanai Fireplace
- Quartz in Secondary Baths
- Custom Cabinetry Throughout
- 10' Ceilings
- Corner Lot



Harmony

A neighborhood for a new way of living

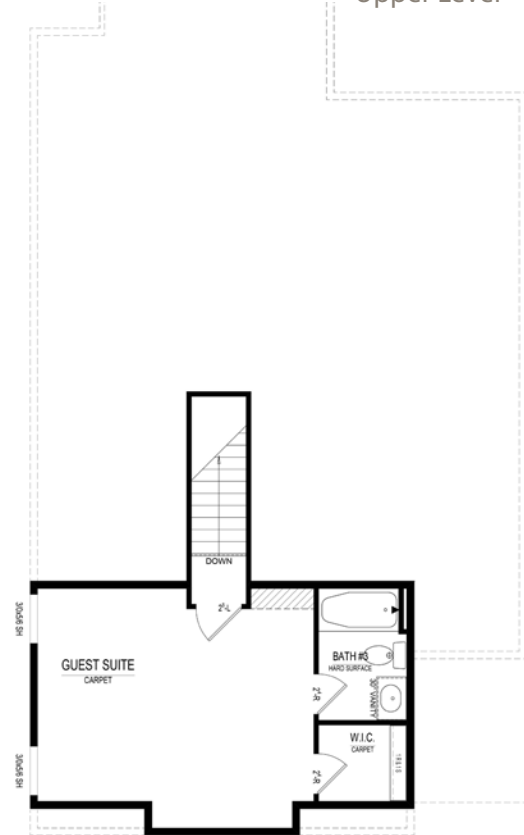
Main Level



Home Details

Homesite: 440
Plan: 1006C
Sq Ft: 1,914
Bedrooms: 3
Baths: 3
Garage: 2
Lower Level: None
BLC#: Not yet listed

Upper Level



Call us at 669.6224 or visit online at Estridge.com

The artistic renderings of the floorplan and front elevation may not reflect the exact features of the home being offered and are subject to change without notice. ©2018 Estridge Homes.