

Winston

KESSLER COLLECTION



15326 Holcombe Drive • **\$445,000**

Available Now!

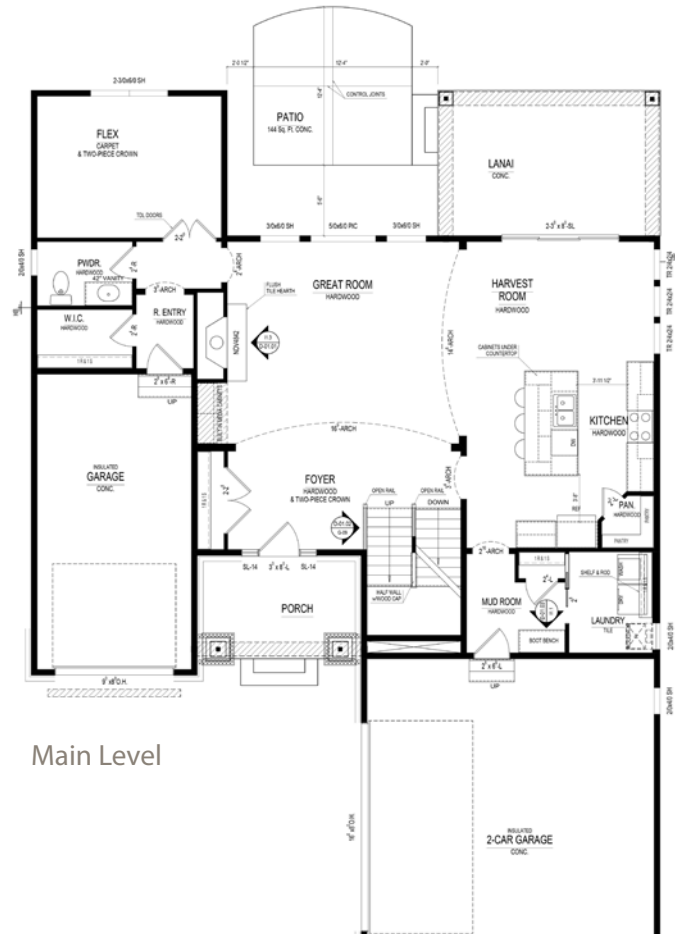
Finished lower level ready for full bath and wet bar
Covered lanai
3-car side-load garage

- Three full baths on upper level
- Master super shower and tray ceiling
- Great room fireplace and mudroom boot bench

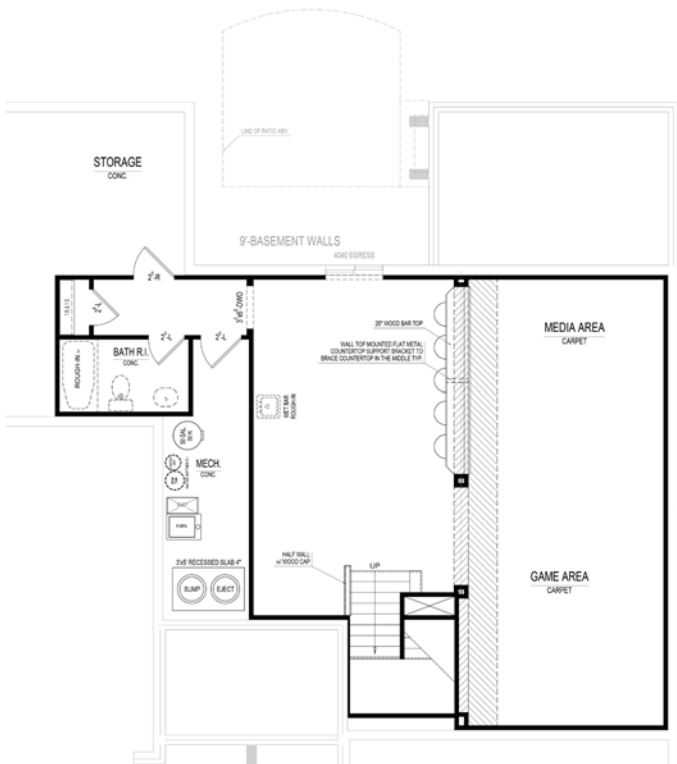


Harmony

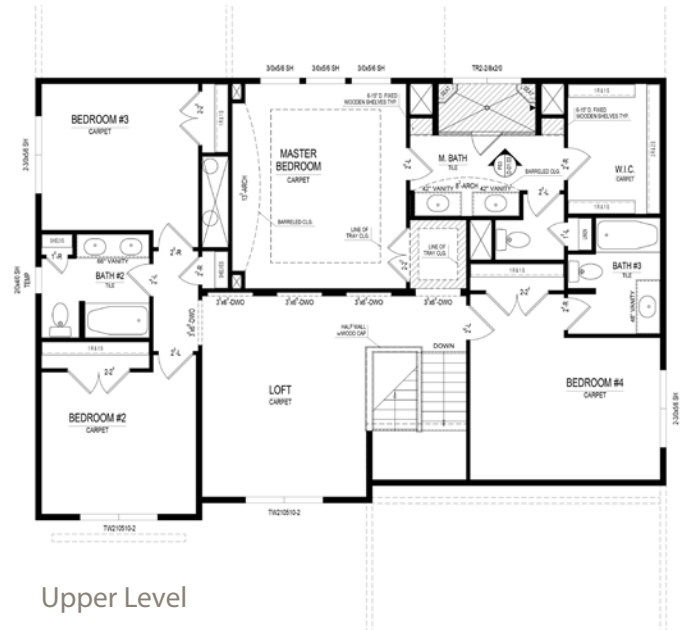
A neighborhood for a new way of living



Main Level



Lower Level



Upper Level

Home Details

Homesite: 157

Plan: 4020B

Sq Ft: 3,526

Bedrooms: 4

Baths: 3.5

Garage: 3

Lower Level: Finished

BLC#: 21505005



Call us at 669.6224 or visit online at LiveinHarmony.info

The artistic renderings of the floorplan and front elevation may not reflect the exact features of the home being offered and are subject to change without notice. ©2017 Estridge Homes.