

Delmar

IRVINGTON COLLECTION



15309 Holcombe Drive • **\$483,000**

Available Now!

Walking distance to neighborhood amenities

Sunroom with Fireplace

Finished Lower Level



Great Room Fireplace

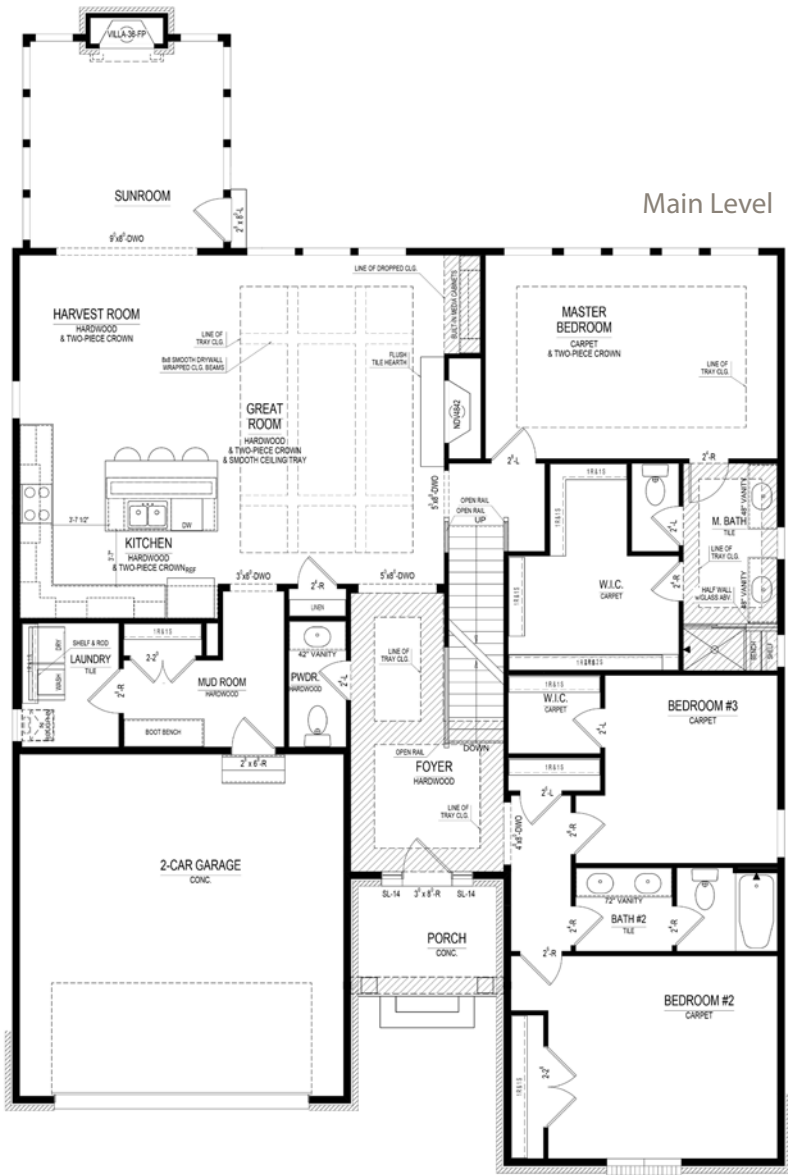
Hardwood Floors

Upstairs Loft



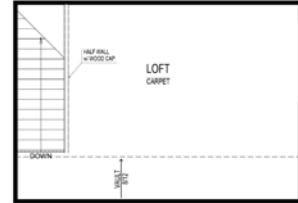
Harmony

A neighborhood for a new way of living

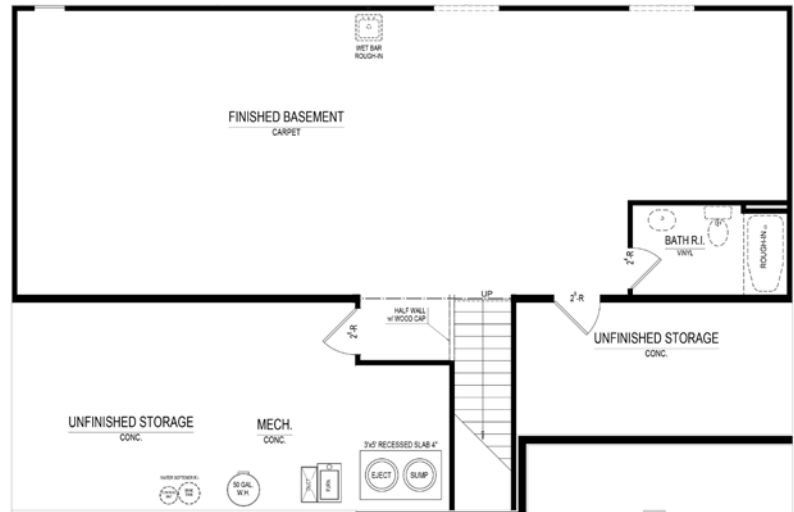


Main Level

Upper Level



Lower Level



Home Details

Homesite: 135
Plan: 3000C
Sq Ft: 3,506
Bedrooms: 3
Baths: 2 full and 1 half
Garage: 2
Lower Level: Finished
BLC#: 2155323



Call us at 669.6224 or visit online at Estridge.com

The artistic renderings of the floorplan and front elevation may not reflect the exact features of the home being offered and are subject to change without notice. ©2018 Estridge Homes.