



# Anderson Hall

*The Whitley* SPRINGMILL COLLECTION

\$464,900



13812 Amber Meadow Drive West • Fishers, IN

Available: **Now!**

4 bed, 4.5 bath floorplan featuring both a study and additional main level flex room. Second level second bedroom features an en-suite bath while bed 3 and 4 share a Jack-and-Jill bath. The large master bedroom with tray ceiling, large master closet and beautiful shower. Great design features such as a backless gas range, granite countertops in the kitchen, subway tile backsplash, engineered hardwoods throughout the main level and a frameless master shower door.



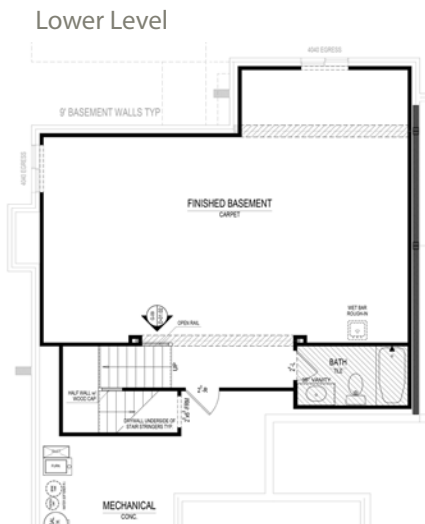
*Different by Design*<sup>SM</sup>

For information call Tasha at (317) 694-5829 • Visit online at [estridge.com](http://estridge.com)

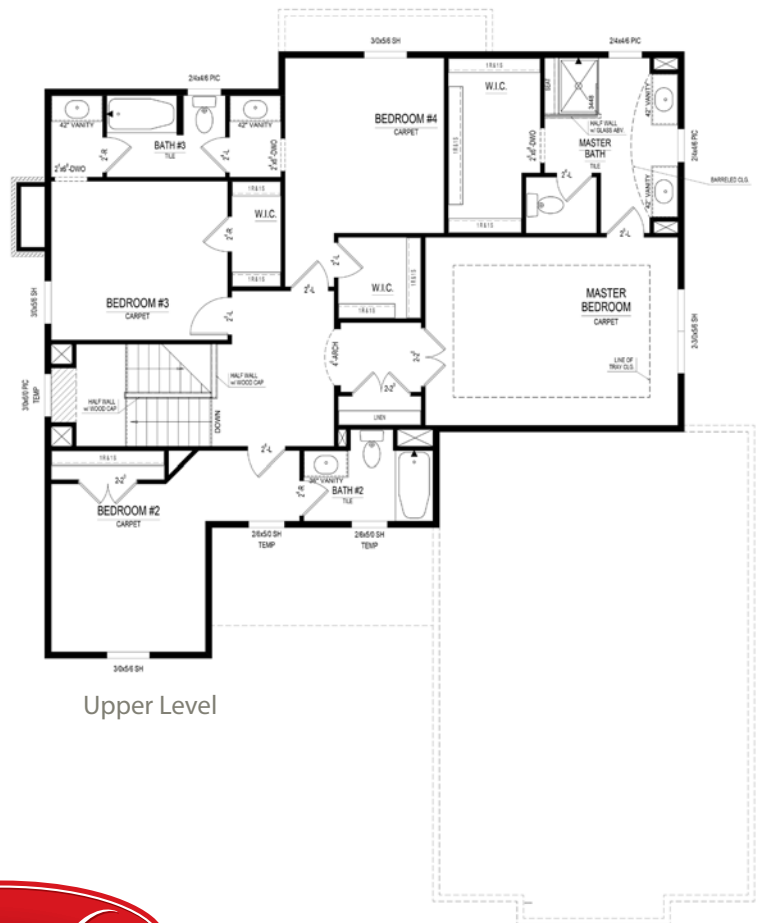
# The Whitley SPRINGMILL COLLECTION



Main Level



Lower Level



Upper Level

## At a glance

- Homesite:** 148
- Plan:** 5045B
- Sq Ft:** 3,702
- Bedrooms:** 4
- Baths:** 4.5
- Garage:** 3
- Lower Level:** Finished
- BLC#:** 21517734



For information call Tasha at (317) 694-5829 • Visit online at [estrledge.com](http://estrledge.com)

\*Square footage includes finished lower level. The artistic renderings of floorplan and front elevation are subject to change. ©2017 Estridge Homes

