



# *Anderson Hall*

*The Boone* SPRINGMILL COLLECTION

\$428,000



13746 Roy Anderson Blvd • Fishers, IN

Available: **Now!**

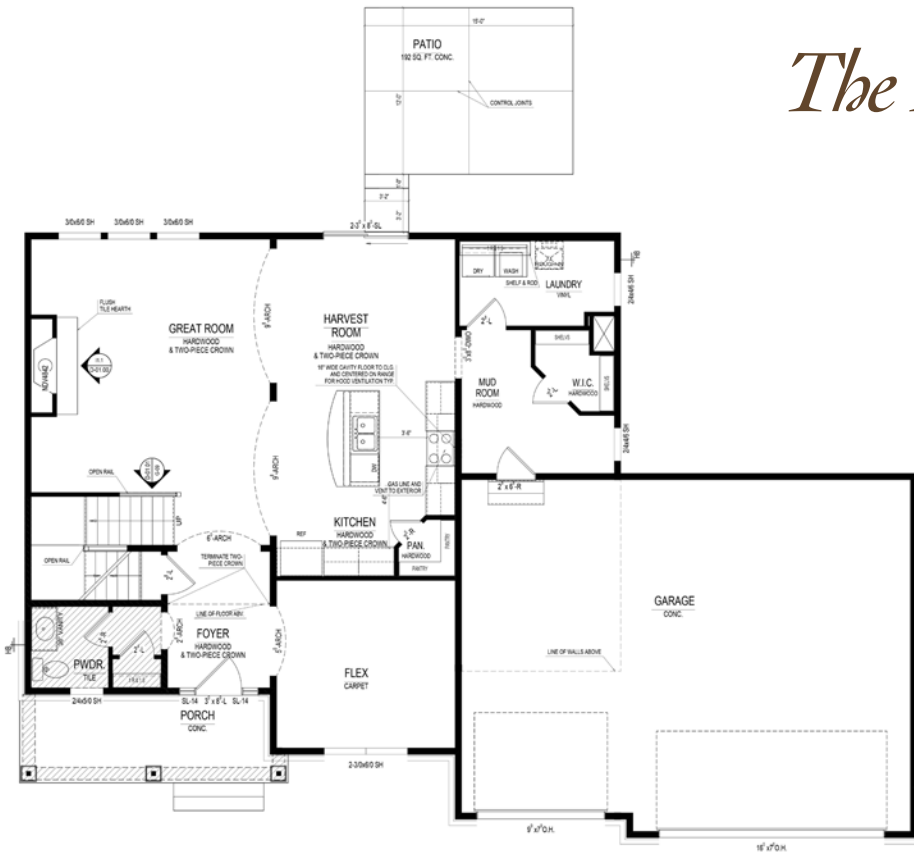
Three car garage, unfinished lower level with full bath rough-in, water softener rough-in and two egress windows. Additional features include tray ceiling in master suite, backless gas range, oversized island, subway tile backsplash, granite countertops in kitchen and master bedroom, frameless master shower door.



*Different by Design*<sup>SM</sup>

For information call Tasha at (317) 694-5829 • Visit online at [ah.estrledge.com](http://ah.estrledge.com)

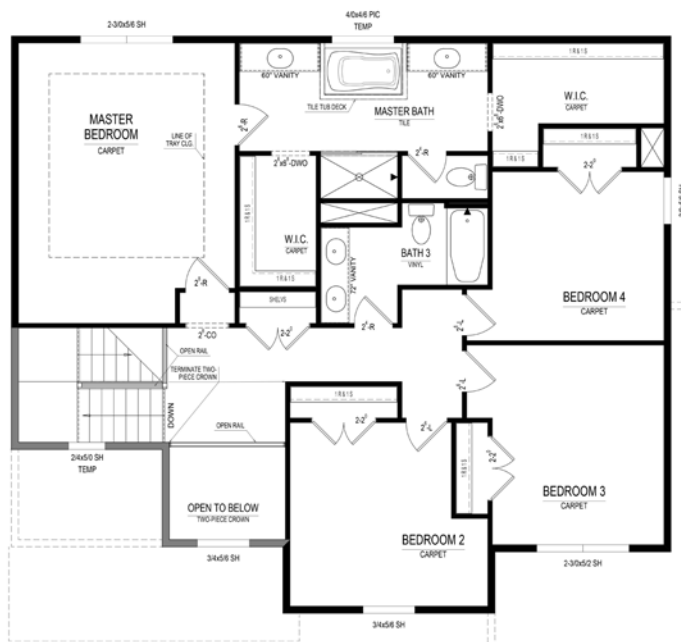
# The Boone SPRINGMILL COLLECTION



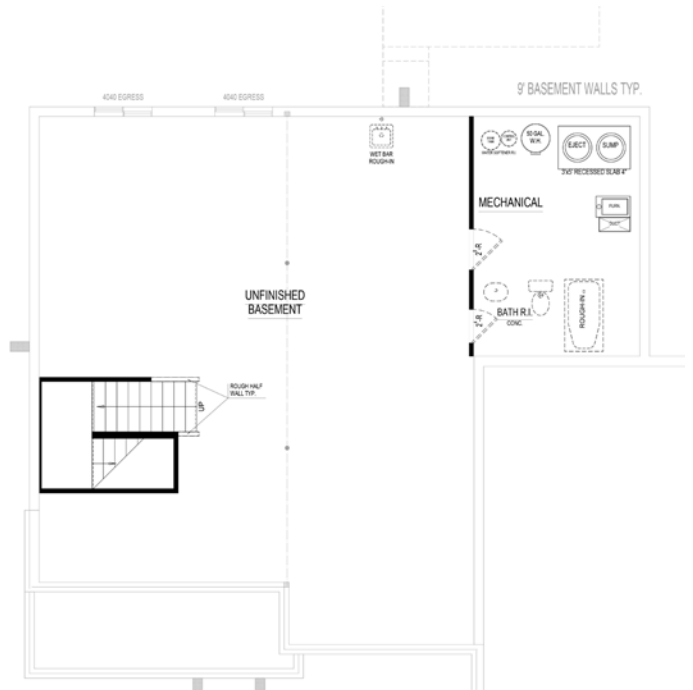
*At a glance*

- Homesite:** 125
- Plan:** 5031B
- Sq Ft:** 3,558
- Bedrooms:** 4
- Baths:** 2.5
- Garage:** 3
- Lower Level:** Unfinished
- BLC#:** 21527605

Main Level



Upper Level



Lower Level



For information call Tasha at (317) 694-5829 • Visit online at [estrledge.com](http://estrledge.com)

\*Square footage includes finished lower level. The artistic renderings of floorplan and front elevation are subject to change. ©2017 Estridge Homes

